

# ABATE OF MARYLAND, INC

**Office Phone #**  
800-843-0252  
410-263-9185

**E-Mail**  
md.abate@erols.com

**Internet**  
www.abate-of-Maryland.org



**State Headquarters**  
8 West Street  
Annapolis MD 21401

**Mailing Address**  
PO Box 1733  
Annapolis MD 21401

**Dedicated to Responsible Motorcycle Legislation**

It is that time of year,  
leaves are starting to fall,  
pumpkins are at the markets,  
and  
temperatures are getting cooler.

It is time for the 8<sup>th</sup> Annual Helmet Protest Rally  
October 10, 1999  
10:00a.m., Anne Arundel County Fairgrounds

**Executive Board**

State Director	Gary "Pappy" Boward	301 824-2782
Assistant Director	Tom Bruce	800 843-0252
Treasurer	R.D. "Mac" McLaughlin	800 843-0252
Legislative Advisor	Kathleen Loerich	301-694-3305
Membership Secretary	Jay Block	800 875-6554
Recording Secretary	Linda Wainer	410 749-2674

**Support Staff**

Products	Jeff & Marie Bowers	410 429-4842
Public Relations	Alisa Hoffman	410 662-1266
Office Manager	Dale Clough	800 843-0252 410 263-9185
Newsletter Editor	Toni Robinson 29786 Adams Road Mechanicsville MD 20659	301 884-0267 301 884-5551 (fax) toni2000r@yahoo.com

**ADVERTISING RATES  
(PER ISSUE)**

Full Page	\$90.00
Half Page	\$50.00
1/4 Page	\$25.00
Card Size	\$15.00

**SPECIAL OFFER:**

Advertise for 1 year (6 issues) only pay for 5 issues

- All Art must be camera ready
- Contact Dale or Toni for placement of an ad

**This newsletter is an official publication of ABATE of MARYLAND, Inc.  
ABATE of MARYLAND Inc., accepts no responsibility for the comments or  
opinions contained within this publication**

**INSIDE THIS ISSUE**

Greetings from the Director	3	Gary "Pappy" Boward	Thunder Rolls Motorcyclists Parade Remembering Vietnam Vets	6	Teal Furguson Stripe Staffe Writer
Pittsburgh Launches Medics on Motorcycles	3	AP Wire Service	Rolling Thunder, Through the Camera	7	Toni Robinson
From the Heart	4	Prez	Follow the Money	8	Kathleen Loerich
Senator Haines Picnic & Fund Raiser	5	Mike Tisedale	Upcoming ABATE Events	13	
Senator Hafer's Fund Raiser	5	Millie Von Sternberg	Chapter Roll Call	14	
Legislative Reminder	5	Lance Baker	MTag Update	18	Wil Crum
Tales From the Road	6	Pam Worchal	Issue Schedule for 2000	19	Toni Robinson

## **GREETINGS FROM THE DIRECTOR!** *Gary "Pappy" Boward*

### **HI FOLKS!**

I'd like to start off by thanking all those involved with the ABATE Rodeo; what a great event it was. A beautiful day and a good crowd on hand made the Rodeo a success. The location is perfect and all those who volunteered made the day go real smooth. Everyone who attended that I talked to had a great time and said next year will be even better. So thanks to all those who worked the events, beer truck, gate, products, and all the other jobs necessary to put on the successful event that this was.

You know that I have talked in the last few newsletters about needing people to help us to help ourselves. Well, here it is again. Last legislative session we came out of the Senate committee and went to the Senate floor with our Adult helmet law repeal. We only needed four (4) votes to pass the full Senate. You might be saying yes we've heard this before — what's new? What's new is a new year is coming and a new decade. We need people to get off their butts and start now getting support or helping to keep support in both the Senate and House. We've already been going to fund raisers (as reported here in the newsletter this issue) and have made many calls. What we need are more new faces and voices to get involved. Many of us have been doing this for a while now and the legislators know who we are. We need them to see new people with new interest. Believe me the more of their OWN constituents that contact them, the more they listen. I've said before if you set up meetings or go to fund raisers and you're not sure what to say, just ask before you go. You don't have to know all the answers to all the questions the legislators may ask, no one person can. But someone in ABATE of MD will know the response and you will be able to get back to them. This also gives them another opportunity to talk to you. Remember, getting in on a personal level with people makes agreeing much easier. So if you do meet with your legislators, let your Chapter Director know before hand and after. Ask questions before you go and let us know how things turned out.

I've been telling the Board of Directors for a while now that someone out there knows something or someone that could help us regain our freedom. That someone could be you, but we will never know unless you make the effort to step up and help. Remember ABATE of MD is a large organization made up of volunteers trying to help each other get back something that was taken from all of us. **WE ALL NEED TO HELP!**

**Speaking of our Legislators, If anyone has a legislator that would like to speak at our Helmet law protest on October 10, 1999, let me know so I can talk to them**

**prior to the event.** We need all ABATE members and friends to show up at this event. The event promotes our unity to our cause and shows the public that we are still here and that we are not going away. Please make plans now. October 10th is not far away. Come join with other motorcyclists in showing the people of Maryland that **WE WANT OUR FREEDOM BACK.**

This year's protest run t-shirt has the Maryland Liberty Tree on the back. I wonder how many of our legislators and citizens know this tree even exists.

The thought for pursuing our freedom now is much the same as it was then. Active citizens not willing to let liberty be taken away while standing idly by.

So once again, set plans for October 10, 1999 bring friends, and support your rights of freedom by having one of the biggest turnouts for ending the decade. There is strength in numbers. In reading of rallies across the country you would not believe the numbers that turn out. So please get the word out. Lets keep the alarms going for a while Sunday morning. To those of you who have been, you know what I mean. To those that haven't, come out and have some fun!

SEE YA THERE  
RIDE SAFE  
PAPPY

## **PITTSBURGH LAUNCHES MEDICS ON MOTORCYCLES AP Service**

**PITTSBURGH (AP)** - The city's best bet for helping those who need immediate medical attention during major events may now arrive on two wheels

Pittsburgh's Emergency Medical Services unveiled its new medical motorcycles Thursday — two Harley-Davidson bikes equipped with medical gear, such as defibrillators, which shock hearts afflicted with cardiac arrest back into rhythm, as well as intravenous liquids and other gear paramedics stock in ambulances.

Five medics who have a penchant for riding motorcycles when off-duty participated in a training program before being given the designation of motor medic.

The motorcycles are one no longer needed by Pittsburgh police. There's even a third medical motorcycle to be used as a spare, officials said.

The Pilot program was launched just intime for the Fourth of July weekend, said Robert McCaughan, assistant chief of Emergency Medical Services. The motorcycles will be used for major events in the city such as marathons.

## **FROM THE HEART** Prez

Howdy Folks!

I recon most of you have heard the latest news of my strange, untimely luck on the Rt. 50 Bridge in Ocean City, MD on the night of July 23rd. Based on my mobile track record, some of you were probably not too suprized when the story broke. Well Let me tell ya, I sure was, and still am! I seem to be the poster child for Murphy's Law...now that's a scary image!

Like other members of ABATE of MD and their stories, I've managed to survive the whole mess so far, but I haven't done it alone. Words fail me as I try to express how grateful I am for the support from all of you throughout our State. The cards, calls, visits, and "jing-a-lings" have helped me keep a positive outlook during this whole ordeal. I'm completely humbled by all of you! I've never been very good at being on the receiving end of things. Apparently that seems to be part of the lesson I'm supposed to learn from this incident.

I've been given the gift of life by the Grace of God and I am trying to focus on the healing process. At this time, I can only say Thank you for all the totally unexpected support. God Willing, I'll return soon to again be of service to you all and our organization. By the time you read this, I should be out of the hospital and on the mend at home. Again, from every ounce of me, thank you and God bless you all!

Frederick County Chapter  
sends thanks to:  
**The Law Offices of  
Rolle & Havens  
Tmothy T. Conlon  
Attorney at Law**

151 West Patrick Street  
Frederick, MD 21701  
Phone (301) 698-4875  
Downtown Hagerstown  
Phone (301) 733-7110  
Fax (301) 694-8859

For his generous \$200.00 donation to  
pay for the trophies given at the

Mon. - Fri. 9 - 9  
Sat. 11 - 6 Sun. - Closed

(410) 257-6619  
(301) 855-8337  
Fax (410) 257-9090

# TANS CYCLES PARTS

Cheryl Brown  
Sales Associate  
9032A Chesapeake Ave.  
North Beach, MD 20714

Parts & Accessories  
Machine Shop  
Gas, Arc & Hellarc Welding  
MD State Inspection

When word spread of Prez's accident, Chapter members passed the hat at the Rodeo and collected almost \$400.00. A unkwon person took up a collection at a local bar in Ocean City and sent the money to help him out. The Lower Eastern Shore Chapters took wanting to help Prez out to heart and threw a fund raiser party for Prez, between the cost at the gate, silent auction, and 50/50 raffle, they raised almost \$1,000.00 for him. This all was done because this is a family and familyalways helps their own. **Get well Prez!**

## Cycle Event

"The Motorcycle  
Calendar of Events"

[www.cycleevent.com](http://www.cycleevent.com)

### EVENTS

Local, Regional & National

### LINKS

Businesses, Insurance

Parts & Accessories

Legal Counsel & More!

**Trivia Contests**

**Reader Feedback**

**List your Events**

**FREE!**

## **SENATOR HAINES PICNIC & FUND RAISER**

*Mike Tisdale, Carroll County*

Yes, you can have fun will doing legislative work. Try going to a fund raiser as those of us in Carroll County did. As you all know Senator Haines introduced our helmet repeal bill. We wanted to thank him for this and what better way than to come out to his fundraiser picnic to show that we appreciate his support and that we will continue to support him.

Along with the great food other things to do included; enjoying the country band that was playing; visiting the Farm Museum, looking at the antique tractors and cars; and looking at the booth the State Troopers had set up. I couldn't help but notice when Will was talking to the state cops his hands were up behind his head, I wonder if that was a natural thing for him (just kidding Will). This was a great family event with plenty of stuff for the kids to do such as, a clown, pony rides, wagon rides, and several. A hot air balloon was also suppose be part of the festivities but I didn't see that, could have been because it was a bit windy that day. Senator Haines asked us if we would hold a bike show during his fundraiser. While we were there, Jeff and Marie signed up a new member, who happens to be Senator Haines son. Welcome to ABATE!



In attendance from left to right: Bryan, Tina, Kenny, Allis, Will, John, Jeff, Marie, Cricket and Mike. Jay Block was also there but unfortunately had to leave early but he was there for the opening remarks and of course, the food.

## **SENATOR HAHER'S FUND RAISER**

*Millie Von Sternberg  
Washington County*

On Saturday, July 17, 1999, a hot July 17th to be accurate. With the sun shinning we pulled out of the Dogpatch about 12:00 and headed west above Frostburg for Senator Hafer's Fund Raiser. He is one of the good guys! We all need to support him!

We arrived on his farm to cooler weather and the smell of pit beef and bean soup. The contribution for the festivities was \$15.00. Not bad considering it was all the Food, Beer, Tea, and Lemonaide you could eat and drink. Along with the beef and the been soup, other items to delight our palets were hot dogs accompanied by every topping possible, potato salad, chips rolls, and assorted cookies.

Music for the day was provided by an old rag-time band! I believe I knew each song they played (don't put the "old" with me knowing all the songs).

All in all it was a great afternoon and a great ride to the fund raiser. For those that missed this, you missed a neat little shin dig! Remember we need everyone's support to make a difference. So Please show your support when you can!

## **LEGISLATIVE REMINDER**

*Lance Baker  
Washington County*

Just because it is summer, don't forget our Politicians! Let them know we our still here. If you hear of any fundraisers, try to attend or let anyone in your chapter know so ABATE members can be there. We can only make a difference if we are seen!

## **TALES FROM THE ROAD**

*Pam Worchal  
Charles County Chapter*

I got goosebumps and butterflies every time I heard or saw a bike over Memorial Day Weekend. Everyone was in town for Rolling Thunder and every bike was a reminder. It's a truly exciting and very serious event honoring those who have served our country, and to make sure that our government doesn't forget the POW/MIAs that haven't been accounted for or brought home.

And so the Charles County Chapter got together on Sunday, May 30th at Memories where Mikey Haiden and Scott Bassett had set out — bright and early a spectacular spread of food for everyone's enjoyment to get them off to a good start. Thanks, guys! And, when 8:30 am drew near, a motorcycle escort of the Maryland State Police, and Charles, St. Mary's and Prince Georges Counties Sheriffs rounded-up the over 100 bikes parked at Memories, and headed to Harley-Davidson of Washington to join in the Yellow Ribbon Ride from there to the Pentagon. This escort was our area's finest on motorcycles doing an excellent job together with some of their caged colleagues. Even when we met another 100+ bikes at the corner of 301 & 228, we were easily handled by taking a lap around the Circuit City parking lot and then joining at the end of the other group. Our escorts were excellent and we thank them!

We hung around Harley-Davidson of Washington looking at all the other bikes, and as we waited we tried to decide whether we would go to the Pentagon, or a "nice spot" Deb & Dave Flick knew of beside the Pentagon, or downtown to watch the parade. We decided on beside but ended-up passing the Pentagon (nice spot taken), touring through Rosslyn, filling-up with gas, running the parade route and parking under the bridge beside the Pentagon to decide on our next step. After deciding to go ahead downtown to watch the parade, Deb & Dave took off first, and then . . . nothing. My bike wouldn't start. Good thing we parked under a bridge in the shade. Tools got pulled-out; observers offered assistance; screws were loosed; wires were checked, parts were reattached . . . nothing. Deb & Dave made another circle back to us and we borrowed their cell phone [Thanks, y'all!] to call a towing service\*. I even rode on the back of Paul's bike back to HDW. He said I wasn't a very good passenger, but I eventually loosened-up (despite missing the event and having a broken bike) and it even seemed fun riding on the back. [But I'm glad I drive my own.] And that pretty much was the end of our day.

Despite how the day concluded, I got goosebumps and butterflies as I later heard all the bikes coming home to Charles County, and was filled with hope that we will bring our MIA/POW's home too.

**HEY MEMBERS! Don't forget to send me your tales from the road. Don't have one for the next issue yet!**

## **THUNDER ROLLS MOTORCYCLISTS PARADE**

**REMEMBERING VIETNAM VETS**  
*Teal Ferguson, Stripe Staff Writer*

**Reproduced from Walter Reed Army Medical Center June 99 Stripe. (Via Charles County Chapter Newsletter)**

It was a hot, humid day in Washington, D.C., last Sunday, the day of the Rolling Thunder motorcycle parade to support the missing in action and prisoners of war of Vietnam, the war so many have wanted to pretend never happened, according to some. It was so hot that some motorcycles overheated, leading riders to park them on the side of the street and watch the rest of the parade roll by, but the ones who could, continued until the parade ended at the Vietnam Wall.

John Schupay and his wife, Candy, who both work at Walter Reed Army Medical Center, were among those who made it all the way through the ride. He is a personal management specialist, and she is a registered nurse in the post-anesthesia care unit. The day for the Schupays began at 6 a.m., when they met their motorcycle group, ABATE of Maryland, Charles County Chapter, in a restaurant in Waldorf. Their group traveled from there to Fort Washington, where they met other groups of motorcyclists. Then they rolled on to the Pentagon. The entire Pentagon north lot was filled with bikers and supporters. Once assembled, they rolled over the Memorial Bridge, around the Lincoln Memorial circle, on to Constitution Avenue, past the U.S. Capitol, and finally to the Vietnam Wall. It was a somber, meaningful ride for the hundreds of thousands of bikers who participated in the ride. These were not bikers as portrayed in the movies. They were not there to raise hell, although there was a lot of black leather to be seen. They were there to honor and remember their 58,000 countrymen who were killed in Vietnam and the 2,200 listed as missing in action, or maybe even still prisoners of war there. Participants ranged from people with gray hair to young couples with children riding with them — more than 250,000 all told, according to organizers.

The Stapes have ties to that war, and this was the second year they have ridden in the motorcycle parade, which has taken place annually since 1987. When John joined the Army in 1976, the war was mostly over, so he did not serve in Vietnam. However, his uncle did, and was one of the lucky ones who came back alive. As for Candy, her first husband served there and, right out of high school, she joined him in Vietnam, buying her own plane ticket so she could be near him during the last part of his tour. He, too, was lucky — he came back alive.

John says the parade of motorcycles reached for miles — practically as far as the eye could see — and the roar of their engines filled the air just like what the parade is name for — "rolling thunder." [Named after President Linden B. Johnson's campaign during the war.] When John speaks of the event, he looks down. "This was a good crowd — what the people in it stood for and what it meant to them. As we were going down

*(Continued on page 7)*

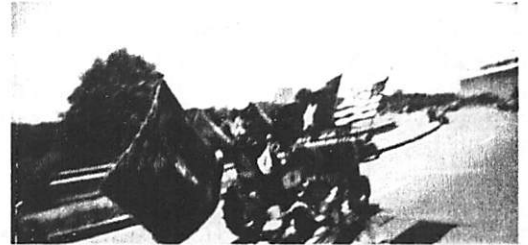
(Continued from page 6)

Constitution Avenue, we saw people holding signs with 'Thank You' written on them. You could tell it meant something to them that the riders were there. We, the riders, are trying to make sure that our politicians do not forget about the war and the missing in action." "The people who died in Vietnam, their memories are entrenched forever in people's memories, but we want the politicians not to forget the folks who are missing and those who could possibly still be prisoners of war. We want the politicians to continue whatever efforts they can until the last person's accounted for." Then at the end of the long, hot, muggy day in Washington, the riders returned to whatever parts of the country they had come from, leaving behind their hope that the politicians heard their message. But bikers will be back next year, just to make sure.

**ROLLING THUNDER, THROUGH THE CAMERA**  
Toni Robinson  
State Newsletter Editor



ABATE Member  
Dave Scheible, prepares  
for the Ride



It's open and has wheels!  
What impressive flags!



ABATE member  
John Robinson waits  
in the baking sun to get  
into the South Parking lot



A view from the Bridge  
as we waited to get into  
the South Parking Lot  
(can you pick your bike  
out)



Cought ABATE Member-  
Doug Mullins still wait-  
ing to get into the parking  
lot. We were not too far in  
front of him. There were  
bikes as far back as you  
could see.



John and Tom Cooper  
wait in the South Pen-  
tagon parking lot to make  
the ride to the Wall.



This is why so many gathered that day in the  
heat...  
*TO NEVER FORGET THOSE THAT DIED FOR  
THEIR COUNTRY  
AND  
THOSE THAT ARE NOT YET HOME*

# ***FOLLOW THE MONEY***

## *Kathleen Loerich*

Many times during the year questions were raised regarding the sources and funding levels for the Maryland Motorcycle Safety Program. There are several sources including motorcycle registration and licensing fees, rider education course fees, federal grants, and miscellaneous sources. How much money is there and where does it come from?

In an attempt to track down where the money comes from, with the ultimate goal of learning how it is spent, I started with money that comes from external sources. The most obvious of these sources is the State and Community Highway Safety formula grant program. This grant program is authorized by the Transportation Equity Act (TEA-21). References to this grant program are known as "402 Funds" because the federal legislation that describes the grant program is Section 402 of Chapter 4 of Title 23 U.S.C.

### **What is 402 Funding?**

The Section 402 program is authorized under the Highway Safety Act of 1966 (23 U.S.C). It is a formula grant program that was established to improve highway safety in the States. As a condition of the grant the Act provides that the States must meet certain requirements. One of these requirements is that each State must have a highway safety program approved by the Secretary of Transportation. This program should be designed to reduce traffic crashes and deaths, injuries, and property damage resulting from those crashes.

The National Highway Traffic Safety Administration (NHTSA) is the agency that administers these grants. Until recently, NHTSA's role was to specify standards of compliance and monitor States' compliance with these standards. New rules established to administer these grants changed NHTSA's role to one of providing guidelines for effective safety programs and to encourage States to model their safety programs using some or all of NHTSA's guideline.

NHTSA published a series of guidelines for programs that are identified as most effective in reducing crashes, injuries, and deaths. These National Priority Program areas are Alcohol and Other Drug Countermeasures, Police Traffic Services, Occupant Protection, Traffic Records, Emergency Medical Services, Motorcycle Safety, Roadway Safety, Pedestrian and Bicycle Safety, and Speed Control. This is the order in which these programs are listed on NHTSA's web site. It could be inferred that this is NHTSA's prioritized ranking of these programs.

The nation-wide grant program was authorized \$932.5 million to be spent over a 6 year period from 1998 through 2003. The following table shows how 402 Funds are allocated for the 6-year period.

Maryland participates in this program and receives 402 Funds. In order to be eligible for these funds Maryland must submit a Performance Plan, a Highway Safety Plan, a Certification Statement, and a Program Cost Summary to document that the funding is spent appropriately.

<b>State and Community Highway Safety Grants (402 Funds for All States)</b>						
<b>Fiscal Year</b>	<b>1998</b>	<b>1999</b>	<b>2000</b>	<b>2001</b>	<b>2002</b>	<b>2003</b>
<b>Authorization (\$)</b>	149.7M	150.0M	152.8M	155.0M	160.0M	165.0M

Maryland's share of 402 Funds is determined by Maryland's population and the quantity of public road miles in Maryland compared to all other states. For Fiscal Year 1998, Maryland received \$2,220,198. For Fiscal Year 1999, Maryland received \$2,219,756. Maryland in their planning documents sets a funding level for each safety program that it will receive 402 Funds.

### **How is 402 Funding Allocated in Maryland?**

This section is by no means complete based on the information available to-date. However, Maryland submits a Maryland Safety Program Annual Report every fiscal year. Copies of this report were available for 1997 and 1998. The following tables show how Maryland utilized 402 Funds in Fiscal Years 1997 and 1998.

For Fiscal Year 1997 Motorcycle Safety is conspicuously obvious by its absence. While in Fiscal Year 1998, Motorcycle Safety is conspicuously obvious again because none of the obligated funds were actually spent.

*(Continued on page 10)*



# Motorcycle Accident?

HIRE ATTORNEYS WHO RIDE

Over \$150 Million Recovered For Our Clients

Law Offices of **RICHARD M. LESTER** Founder, Aid to Injured Motorcyclists

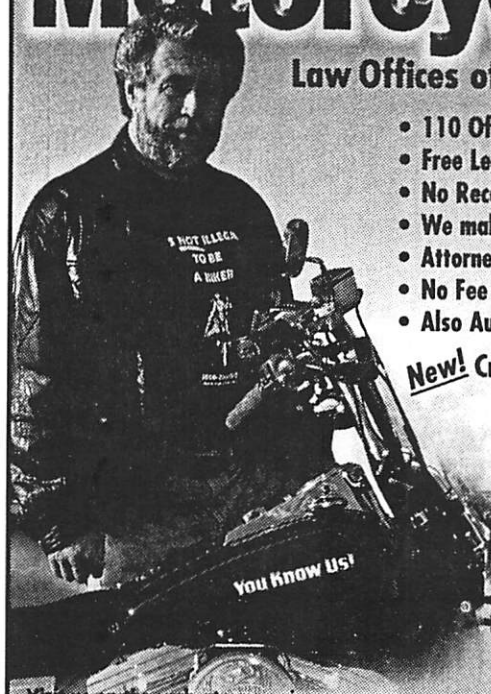
- 110 Offices Throughout North America
- Free Legal Consultation
- No Recovery = No Fee
- We make House Calls
- Attorneys in Every State and Province Who Ride
- No Fee on Motorcycle Damage Recovery
- Also Auto Accidents

24 Hours - Toll Free (800) 531-2424  
**(800) ON-A-BIKE**

Call for Your **New A.I.M. Card with Lost Key Finder**



**New! Criminal Defense Nationwide**



Visit us on the web at [www.aimn.com](http://www.aimn.com)

We are endorsed by the National Coalition of Motorcyclists and more than 600 motorcycle groups throughout the United States and Canada, and serve as Legal Counsel for the Confederations of Clubs.

**Affiliated Maryland Offices to Serve You**

**ATTENTION ABATE OF MARYLAND MEMBERS:** Our nationwide network of A.I.M. attorneys donate a significant portion of their legal fees from motorcycle accident settlements back into motorcycling by being the sole financial sponsor of the National Coalition of Motorcyclists.



## LAW OFFICES OF **JAY IRWIN BLOCK, LLC**



Attorney for **ABATE of MARYLAND, Inc.**

### Personal Injury Inquiries:

800 662-2453 (AIM)

### All Other Matters:

410 356-6555

800 875-6554

### Office Locations:

⇒ Baltimore

⇒ Owings Mills

⇒ Westminster

Other Locations by Appointment

### MEMBER OF

- ABATE
- AIM
- HOG
- Antique Motorcycle Club

Former Motorcycle Safety Instruction

## **YOUR MOTORCYCLE ATTORNEY**

(Continued from page 8)

If you noticed that the amount of money obligated to a program is higher than the amount allocated for Maryland, this is because of a "carry forward" policy. This policy describes the disposition of unexpended balances. This policy states that any funds which remain unexpended after final reconciliation shall be carried forward, credited to the State's highway safety account for the new fiscal year, and made immediately available for use under the State's new highway safety program. Carry-forward funds can be 'reprogrammed' from one category to another without regard to the program area from which they were carried forward.

The good news is that if 402 Funds are not spent, they are not lost. However, the bad news is that if funds were allocated for a particular purpose, they can be re-allocated in a future year for a different program area.

Just because \$20,000 are obligated to Motorcycle Safety in 1998 does not mean that amount will be applied to Motorcycle Safety in 1999 or subsequent years. Those funds may be reallocated to a different program in the future.

**Why is it Important to Motorcyclists?**

For Fiscal Years 1997 and 1998 402 Funds allocated to Motorcycle Safety in Maryland were non-existent to negligible. In terms of understanding what this really means, it might be useful to see how other States allocated their funds. If other States had similar Motorcycle Safety funding levels conclusions drawn from this information might be different.

<b>Maryland 402 Funds Overview Fiscal Year 1997</b>		
<b>Program Area</b>	<b>Federal Funds Obligated</b>	<b>Federal Funds Expended</b>
Planning & Admin.	103,115	64,176
Alcohol	436,270	354,042
Emergency Medical Services	145,919	112,567
Occupant Protection	287,252	273,285
Police Traffic Services	521,344	305,813
Traffic Records	78,587	73,573
Comprehensive Traffic Safety Programs	1,485,483	1,285,948
Youth Alcohol	211,533	172,097
Safe Communities	73,400	59,217
	3,342,903	2,700,718

<b>Maryland 402 Funds Overview Fiscal Year 1998</b>		
<b>Program Area</b>	<b>Federal Funds Obligated</b>	<b>Federal Funds Expended</b>
Planning & Admin.	91,902	77,508
Traffic Records	105,218	54,667
Alcohol	246,707	109,416
Police Traffic Services	400,243	159,201
Occupant Protection	417,653	355,647
Emergency Medical Services	87,973	69,973
Comprehensive Traffic Safety Programs	707,562	591,593
Safe Communities	301,429	237,584
Youth Alcohol	99,078	52,541
Roadway Safety	70,403	60,220
Motorcycle Safety	20,000	-
	2,548,168	1,748,350


*(Continued from page 10)*

What I am faced with here is a dilemma. NHTSA declares that Motorcycle Safety is one of nine National Priority Program areas. If this were the case, then one would expect that Maryland would direct at least some 402 Funds to the Maryland Motorcycle Safety Program, driver awareness campaigns, and other motorcycle safety issues. It is possible however; that the Maryland Motorcycle Safety Program is adequately funded by existing revenue sources and 402 Funds are unnecessary. I suspect that somewhere in the middle lies the answer.

Maryland motorcyclists have the Maryland Motorcycle Safety Program today. However, there have been times in the past when program funding was (and still is) an issue. The very existence of the Maryland Motorcycle Safety Program was threatened. In order to assure that the Maryland Motorcycle Safety Program is adequately funded, we need to understand all of the funding sources and ultimately how they are spent.

It is clearly obvious from information obtained from the Maryland Department of Transportation and NHTSA that Motorcycle Safety funding in Maryland is not coming from 402 Funds. Now that we know the Maryland Safety Program is funded primarily by internal (State) funds and not external (federal grants) funds, the next step is to determine exactly where the funding comes from.

Follow the money.



Be a Legislative Warrior! Have your name appear below for six consecutive issues. Send a check or money order to the State Office. Mark it for Legislative Warrior and your business or name will appear here. This contribution will go a long way to strengthen our voice in Annapolis. And be able to send out information in addition to this newsletter!



### **Legislative Warriors**

- ☺ Gary Keim ☺
- ☺ Kathleen Loerich ☺
- ☺ Dave Silva ☺



**THANK YOU FOR YOUR SUPPORT**

## RODEO WINNERS

Donny Fellner

Well the ABATE of Maryland, INC. Rodeo '99 is in the dust behind us now. All in all everything went well. Thanks to all the participant's in the events and the People's Choice Bike Show and a special THANK YOU to the volunteers who helped out; you made it a smooth running event.

Now on to the important stuff, THE WINNERS

If you know anyone listed below, congratulate them. Maybe next time it will be your name on the list and you can wear that medal. Speaking of next time, don't forget to mark you calendar for the Mid-Shore Labor Day Party in Easton, MD. While you are at it, start talking up the Helmet Law Protest Run. Lets get everyone we can to ride to the capital and let the Gov. know how we feel about having to wear that @\$\* helmet!

EVENT	WINNER(s)
Slow Ride	Paul Wisner
Keg Race	Paul Wisner
Jousting	Donny Morris
Ride the Rail	Donny Morris
Water Cup Race	Donny Morris
Water Balloon Toss	Donny & Linda (Howard County)
Weenie Bite	Scott Victor and Partner Sorry didn't get your name)
Men's Tug-O-War	Beer Hawgs
Women's Tug-O-War	Block's Babes Don't you wish Jay!
6 Legged Race	Virginia's team (sorry don't have the other names)
People's Choice Bike Show	Jeff Harshman from Gaithersburg

### ABATE OF MARYLAND

**is for all riders of all types of bikes  
If you ride YOU need to be a member!**

Use the form on the back of the newsletter to become a member of the only State wide legislative organization fighting for your rights in Maryland.

**ATTENTION MEMBERS:** Do you manufacture any type of motorcycle merchandise and are looking for a place to showcase it. How about the Internet. Contact Keith Biggs Director of Merchandising for Rider's Hill ([www.riders-hill.com](http://www.riders-hill.com)). This is a new internet e-commerce venture under development through Cyberconcepts, Inc.

Contact Keith at: 812-659-3559  
scooter@riders-hill.com  
or

Keith Biggs, Director of Merchandising  
Rider's Hill Division  
Cyberconcepts, inc.  
PO Box 328  
Lyons, Indiana 47443

Keith is the Indiana State Representative for MRF

### ABATE FALL POKER RUN/PARTY

MID SHORE CHAPTER • ABATE OF MARYLAND, INC

SATURDAY OCTOBER 9<sup>th</sup> 1999

SIGN UP 10:00 TO 12:00 AT  
EASTERN SPRINGS WATER COMPANY  
RT 16 & 578 • 6229 HARMONY RD

\$5 PER HAND TROPHIES 1<sup>st</sup> 2<sup>nd</sup> 3<sup>rd</sup>

**END A GREAT RIDE WITH A GREAT PARTY**

STARTING AT 3:00 TILL \$10 PER PERSON



BEEF AND BEER



LIVE MUSIC BY BLACK BOTTOM BAND  
6:30 TO 10:30

23259 GILPIN POINT RD HARMONY, MD  
CALL FOR MORE INFORMATION 410-820-5071  
LIMITED TENT CAMPING AVAILABLE



As a Reminder to our members:

Ed Lough, of Northwestern Mutual Life, is still offering health insurance to our members through Blue Cross and Blue Shield and other companies, please contact him if you are interested.

301-733-5433 or 1-800-833-5433

# Upcoming ABATE Chapter Events

## September 1999.

- 22 Carroll County Chapter Riding in Westminster Fallfest Parade.**  
Line up at 6:00 p.m. on Monroe Street. Call Alisa at 410-662-1266 for more info.
- 24 Baltimore County Chapter Ride to Harley Davidson York, PA Open House.**  
Meet at Big Falls Inn on Rt. 7 at 7:30am depart at 8:00am
- 25 St. Mary's County Poker Run and Crab Feast.**  
Sign-up is at 1:00pm at Frans, down on Rt. 249, Calloway MD. Theme is Bridges, Water & Riddles

## October

- 3 Baltimore County Chapter Fall Follage Poker Run**  
Sign up 11:00am to 1:00pm at the Big Falls Inn Rt. 7 (Old Philadelphia Rd) Rider \$5.00 - Passenger \$4.00
- 9 Mid Shore Chapter's Fall Poker Run & Party**  
Sign-up 10:00-12:00pm at Eastern Springs Water Co. Rt. 16 & 578, 6229 Harmony Rd. See flyer
- 10 ABATE of Maryland 8th Annual Helmet Law Protest Run & Rally.**  
From 10am to 4pm. Meet at the Anne Arundel County Fairgrounds at 10am. Ride to the Capitol at Noon. Live entertainment, vendors, food and beverages. ABATE Members Free. Non-Members \$5.  
Vendor spaces 10x10 \$50 each. Vendor setup begins at 8am.  
Directions From Washington: Route 50 E to Route 450 (Crownsville Exit). Right at light, fairgrounds on the right.  
Directions from Baltimore: Route 3 to Interstate 97, to Crownsville, Right at light, fairgrounds on right.
- 16 Frederick County Chapter Annual Toy Run and Poker Run**  
Registration from Noon to 12:30. Leave The Place at 12:30 pm. Must bring a toy or donate \$5. Poker run is \$5 per hand. Start at the Place on Grove Road in Frederick. Stops are Buckeystown Meat Market on Route 85, Rock's Place in Jefferson on Route 180, Buster's on Route 40 West, and end at Mel's Airport Inn on Route 15 North.
- 23 Mid Shore Chapter's Halloween Party**  
Grasonville FVW, Grasonville, MD 8:00pm til 12:00pm
- 23 Montgomery County Chapter Halloween Party.**  
Backstreets Cafe, Rockville, MD. Details will follow.
- 30 Washington County Chapter Halloween Party**

## November 1999

- 6 Anne Arundel County Chapter Veterans Day Poker Run.**

Times: 10-12:30 am Registrations; 12:30 Last Rider Out; 5:30 pm Prizes Announced. Location: Brewsters Glen Burnie, MD. Cost: Riders \$6, Passengers \$4. Vendors invited, no fee. All bikes welcome. Prizes for 3 highest hands \$100, \$50, \$25, Lowest Hand ???, Door Prizes, 50/50. Directions From Baltimore: MD Route 2 (Ritchie Highway) south to Furnace Branch. Turn Left. Go 1/4 mile. On the right. Directions From Annapolis: MD Rt 2 North to Glen Burnie. At Furnace Branch Road, turn right. Go 1/4 mile. On the right. Directions From Washington DC: Hwy 50 West to MD Rt 2 North to Glen Burnie. At Furnace Branch Road, turn right. Go 1/4 mile. On the right.

- 14 St. Mary's County Chili Cook-off.**  
Come Out For St. Mary's Finest Chili from members and friends of ABATE. Come out to Brewskis Tavern located in Loveville, MD. Bring your best chili and your taste buds. Begins at 1 pm with judging at 3 pm. \$2.00 Entry Fee.
- 14 Frederick County Turkey Shoot.**  
Starts at Noon at Doug Leach's Park. The date for this event is tentative and may change.

## December 1999

- 11 Carroll County Springfield Donation Run and Christmas Party.**
- 11 St. Mary's County Chapter Christmas Party.**  
Lenny's Restaurant.

## January 2000

- 23 Frederick County Pool Tournament.**  
Mel's Airport Inn. Starts at Noon. Date for this event is tentative and may change.

## February 2000

- 19 Frederick County Sweetheart Dance.** Mount Pleasant Ruritan Hall. Date for this event is tentative and may change.

## April 2000

- 16/30 Frederick County Blessing of the Bikes and Poker Run.**  
Carole and Dale Carty will lead.

## June 2000

- 25 Frederick County Poker Run.**

## August 2000

- 6 Frederick County Family Picnic.**

## August 2000

- 27 Frederick County Farewell to Officers Poker Run.**

As a reminder: Effective September 20, 1998 any flyers, programs, newsletters, etc. that is for an ABATE function will have the ABATE LOGO on the flyer. We need to be seen and the logo is our identifier. If you need a copy contact Dale at the State office or Toni. Or you can copy from the web page! The old standard cut and paste works just fine!

## CHAPTER ROLL CALL

*This section is for the chapters that make up  
ABATE OF MARYLAND, Inc.  
Enjoy reading about what they have been doing*

### ANNE ARUNDEL COUNTY CHAPTER

Chapter POC's	Bill Gawthrop Phil Long	410 451-2610 410 923-6996	Meets 2 places each month: <b>Glen Burnie Area:</b> 1st Wednesday at the Double Eagle on Point Pleasant Rd. <b>Gambrills - Crofton Area:</b> 3rd Wednesday at the Coyote Cafe
---------------	----------------------------	------------------------------	---

### BALTIMORE COUNTY CHAPTER

Director	Will Crum	410-780-9342	Meets 2nd Tuesday each month, 7:30pm at Rosedale Inn, Corner of Philadelphia Rd. & Chesaco Ave. <b>Chapter Highlights:</b> Our Poker Run (scheduled for August 8th) was rained out AGAIN! we have rescheduled it AGAIN (three times better be the charm) for October 3rd! We will be having another Ride-In Bike Show in conjunction with the Essex M/C Field Meet on September 19th. MARCH OF DIMES~RIDE FOR HEALTHIER BABIES Held on Sunday August 22nd. This ride was a HUGE success!! Last year they had 250 bikes raise \$8 000. This year they counted 1,032 bikes and so far has banked \$60,000!!! They still have monies coming in and envelopes unopened! We (ABATE) were present with a table of products and information.
Asst. Director	Allsa Hoffman	410-662-1266	
Events	Bill Bruneau	410-574-3943	
Legislative	Lee Dix	410 547-5340	
Secretary	Michelle Anderson	410 780-9342	

michellea@primeretail.com

### CALVERT COUNTY CHAPTER

401 East Range Road, Lusby, MD 20657

Director	Rick Defelice	410 394-0663	Meeting place and time was not available at time of printing so call me and I will let you know all the details.
----------	---------------	--------------	--

**CALVERT HIGHLIGHTS:** To bring awareness that the Calvert County Chapter is getting started again, we set up a booth at Chesapeake Ranch Estates, "Night out against Crime" on August 3rd. We had a great spot (right at the door) to greet people as they were coming and going. We met several of the residents who had just bought motorcycles and seemed interested in what ABATE was all about. We handed out many of the "What is ABATE" flyers. All who stopped were informed of the first meeting time and place. We are keeping our fingers crossed for a good initial meeting.

### CARROLL COUNTY CHAPTER (NEW OFFICERS!)

PO Box 202 Sykesville, MD 21784-0202

Coordinator	Ward Glass	410-239-4102	<b>Chapter Meeting:</b> 1st Wednesday of the Month, 7:30pm <b>Officer's and Events Meeting:</b> 3rd Wednesday of the Month, 7:30pm All meetings are held at the Colonial Inn on Route 30 in Reisterstown Road (near the intersection of Rt. 91)  <b>CARROLL Highlights:</b> Thanks to everyone who helped make the State Rodeo a great success! Special thanks to Jack Roderick and Elaine May who worked the front gate the better part of the day. Can't forget the guys who kept the brew going at the beer truck! Thanks to Kenny Shipton and Jay Block for not letting the folks go thirsty!
Asst. Coordinator	Mike Tisdale	410-876-2175	
Events Coordinator	Chuck Bardoff		
Asst. Events	Sandi Saltzman	410-239-0584	
Legislative Rep	Jay Block	800-875-6554	
Asst. Legislative	Sandi Saltzman	410-239-0584	
Membership	Marie Bowers	410 429-4842	
Public Relations	Kricket Gensen		
Secretary	Kim Bowers	1-717-630-1101	
Treasurer	Tina Shipton	410-466-7556	
Sergeant-at-Arms	Jeff Bowers	410-429-4842	
	Tina Keith	410-857-5846	
	Jim Lippy	410-848-4061	

### Charles County

[www.wvldboar.com/abate.html](http://www.wvldboar.com/abate.html)

PO Box 6456, Waldorf, MD 20603

Director	Micky Edwards	301-609-7895	Meets 2nd Tuesday each month at Legends located on 301 South across from the St. Charles Town Center, Waldorf, MD 20601
Asst. Director	Chris Morgan	703-644-1100	
Treasurer	Deb Flick	301-843-6998	<b>Chapter Highlights</b> We've been rather quiet over the past several months so we won't take up a page this time! But just wait till next issue!
Sec./Newsletter	Pam Worshal	301-870-8856	
Activities Dir.	Steve Sanner	301-888-2568	
Legislative Dir.	John Schupay	301-362-4315	
Membership	Angel Morgan	703-644-1100	

<b>FREDERICK COUNTY</b>		PO Box 686, Walkersville, MD 21793
Director	John Croghan	Meets 1st Tuesday at 7:00pm at Mel's Airport Inn, Rt. 15 North of Frederick
Asst. Director	Violet Korrell	
Treasurer	Linda Croghan	
Secretary	Lori Kidwiler	
Membership	Gail Plemmons	
Legislative	Jean Morris	
Events	Tommy Lamb	
	Larry Roberts	
Sergeant-at-Arms	Tommy Crum	
	Dale Carty	
	Dale Grimm	
	Donnie Morris	
	Tim Wilson	

<b>Howard County</b>			
Director	Tom Greenbank	301-854-0228	Meets 1st Wednesday at 7:30pm at Tom Greenbanks Farm Call for directions!

<b>LOWER EASTERN SHORE CHAPTERS</b>			
Both meet 1st Sunday each month at (new place) Tony's Pizza on Snow Hill Road, Salisbury, MD (across from the Holly Center)			
<b>Summerset County</b>		Director	Mike Gillikin
		Assistant Director	Mark Coleman
		Events Coordinator	John Cappell
<b>Wicomico County</b>		Director	Linda Wainer
		Assistant Director	Dino Brittingham
		Treasurer (both)	Shannon Brady

<b>MID SHORE CHAPTERS (New Officers!)</b>			
All meet 2nd Thursday each month, 7:30pm at the Easton FW, Easton MD			
<b>Caroline County</b>	Director	"CHEWIE"	410-673-2984
	Co-Director	"HAWK"	410-822-6208
<b>Dorchester County</b>	Director	Kevin "Command" Woldt	410-673-2398
	Co-Director	Myron Cherry	410-482-7353
<b>Queen Anne County</b>	Director	Bill "Wrench" Kuykendall	410-758-2234
	Co-Director	Dave "Waterboy" Labelle	410-820-5071
<b>Talbot County</b>	Director	Marty "Wires" Schultz	410-745-5135
	Co-Director	Steve "Dozer" Prentice	410-822-4434
	Treasurer	Carol Carson	410-758-4751
	Secretary	Darlene "Jellybean" Prentice	410-822-4434
	Events	"FEATHER"	410-822-6208
	Legislative	"UNCLE RAY"	410-820-8045
<p>Chapter Highlights: Just a quickie! Check out the events Calendar and stay tuned for a complete write up on our Annual Labor Day Party!</p>			

<b>MONTGOMERY COUNTY</b>			
Director	Dave Sherman	301-460-7141	Meets twice a month: 1st Tuesday each month, 7:30pm, Lone Star Cafe, Gaithersburg, MD 3rd Tuesday each month, The Layhill Cafe, Bel Pre & Layhill Rd. Silver Spring, MD
	dsherman@erols.com		

<b>PRINCE GEORGE'S COUNTY</b>			
Director	John Limbaugh	301-773-6170	Meets 2nd & 4th Tuesday of the month at Remington's
Assistant Director	pgabate98@aol.com		
Events	Carl Buhner		
	Linda Halbritter		
Legislative	Jay Wagner		
Treasurer	Charles & Pat Bckley		

**NORTH EASTERN CHAPTER** (Cecil, Harford & Kent Counties)

Director Bob Grier  
 Assistant Director Guy Parent 410-287-0443  
 gparent@dpnet.net  
 Events Coordinator Scott Trowbridge  
 & Newsletter strowbridge@dpnet.net 302-540-2494  
 Legislative Al Conrad  
 Secretary Open  
 Treasurer Dave Kinney

Meets 1st Sunday each month at the North East, VFW, North East, MD

**Chapter Highlights  
 Past and Present**

The past is the past there is no sense in sweating over the small stuff. With that in mind we will be moving forward. But 1st a little catch up, we had several bumps to hurdle in the past few months in order for us to get started we had to form an organizing committee which consisted of: Guy Parent; Jim Hamilton; Bobby Grier; Scott Trowbridge. The state required a meeting place before we could actually

become a chapter and elections would have to be held. It was voted on at our first by 20 members to start the chapter with the following name "Northeastern chapter"; this was decided on for it will cover the northeastern part of the state. Also that we would hold multiple meetings to accommodate the large area. We are looking for volunteers in Harford and Kent counties to assist with finding a meeting place "so if you're interested in helping call Guy Parent 410-287-0443 or be at the next meeting.

Now that we have briefly covered a tid bit of history, lets discuss the future plans:

Define Calendar of events / Monthly ride to promote Abate / Legislative agenda / Membership Drive /Networking with other Chapters

Once participation is up then we invite local legislative reps to our meetings / Set time and place for Abate's annual helmet protest run

Local Internet site at www.simplecom.net/gparent. This is under construction. The goals listed are only a start, but remember we will be very successful in numbers.

The next step for all to do, is network with all bikers and build the membership up. Let's have a strong showing at the next meeting.

Membership drive / Calendar of events / Meeting participation / Legislative issues & sending out invitations to our meetings

A mass turnout for helmet protest run / Volunteer to help find a mtg. Spot in Harford County to hold a 2nd mtg.

**ST. MARY'S COUNTY**

PO Box 317, California, MD 20619-0317

Assistant Director Mary McMaster 301-373-6414  
 Events Tiny Traub 301-994-9186  
 Legislative John Wise 301-475-1974  
 Membership/ Ronnie Bryan 301-373-5688  
 Products  
 Treasurer Matt McMaster 301-373-6414

Meets 2nd Friday each month, 7:30pm at Lenny's Restaurant, 235 North California, MD, across from the Wildwood Shopping Center.

**Chapter Highlights**

*Observation Run* Weather was picture perfect for our run which our Legislative Analyst, Susan Lindsey put together. Before telling you all about it, a big thank you to Susan for time she put in to make it a great run! 18 bikes met at Lenny's

for breakfast and sign up We left out and headed to the senic Northern Neck of Virginia..We picked up two more riders enroute to the bridge. Stops included a break at George Washington's birthplace; The Crazy Crab for lunch; and several gas/rest stops. We ended up at Fitzies back on this side of the bridge in Compton. All in all it was over a three hundred mile run. The unofficial bug splatter award went to Joe Lundregan, the bug was ment for Greg Casoni who dodged in the nick of time but poor Joe took the brunt of the bug. Another unofficial bug splatter award went to Michelle Fox her entire light was this gooey-greenish yellow.

*August Evening Poker Run* - OUR POKER RUNS are rain cursed! We have only had two this year and both rain-soaked. We started out with 37 hands sold! There would have been more but they held their finger up, saw raining coming from the North so they went South.

Our winner was Debbie Guy with (what a hand this was) 3 Queens and 2 aces. Congrats Debbie! All and all it was a pretty good run.

**6 NOVEMBER  
 VETERANS (DAY)  
 POKER RUN**

Sponsored by

**ABATE OF MARYLAND  
 Anne Arundel County Chapter**

Protecting the interests of  
 Free State Riders

VENDORS INVITED: NO FEE IN  
 ALL BIKES WELCOME  
 ALL CLUBS WELCOME  
 VENDORS INVITED: NO FEE!!!  
 NON-ABATE MEMBERS WELCOME



PRIZES FOR 3 HIGHEST HANDS  
 - \$100, \$50, \$25  
 - LOWEST HAND - 777  
 - BOOB PRIZE - 9999  
 NON-ABATE MEMBERS WELCOME

**TIME: 10-12:30 AM - REGISTRATION  
 12:30 PM - LAST RIDER OUT  
 5:30 PM - PRIZES ANNOUNCED**

**LOCATION: BREWSTERS, GLEN BURNIE, MD**

DIRECTIONS: From BALTIMORE: M4 Route 2 (Beltway) south to Furness Branch. Turn Left. Go 1/4 mile. On the right. From ANNAPOLIS: M4 Rt 2 North to Glen Burnie; At Furness Branch road, turn right. Go 1/4 mile. On the right. From WASHINGTON DC. Hwy 20 West to M4 Rt 2 North to Glen Burnie; At Furness Branch road, turn right. Go 1/4 mile. On the right.

JOIN ABATE AT SIGNUP. RIDE FREE

**COST: RIDERS \$6 PASSENGERS \$4**

RUN WILL COVER A VARIETY OF SHOPS, SALOONS, AND EGGITS.

For more information:

CALL: 410-451-3610 FAX: 410-923-0996 BREWSTERS: 410-768-8229  
 ABATE MEETS 1<sup>st</sup> WEDNESDAY, EACH MONTH, 7:00 PM, AT BREWSTERS.  
 3<sup>rd</sup> WEDNESDAY, EACH MONTH, 7:00 PM, AT THE COYOTE CAFE, M4 Rt 3, 1/4 MILE SOUTH  
 OF MD RT 175 IN GAMBRILLS, NORTH OF CROFTON. VISIT US.  
 THE PROCEEDS FROM THIS RUN ARE USED TO SUPPORT RIDER FRIENDLY  
 LEGISLATION.

(U.S. MILITARY VETS MC WILL BE RECRUITING. BRING YOUR DD 214)

**ABATE of Maryland, INC**  
**St. Mary's Chapter**

**CHILI COOK OFF**  
**November 14, 1999**

Starting at 1:00pm

Brewskis Tavern,  
 Loveville Maryland

\$2.00 Entry Fee  
 NEW Prizes!  
 People's Choice  
 Judge's Choice  
 More info? Call Tiny  
 301-994-9186

Pull out those recipes,  
 clean the dust off the pots,  
 It's time for St. Mary's Chili Cook-off



**WASHINGTON COUNTY**

Director	Lance Baker	301-665-1173
Assistant Director	Scott MacMichael	301-824-5104
Legislative	John Smith	717-762-8795
Membership	Millie Von Sternberg	301-842-3094
Newsletter	Millie & Dana	
Products	Scott & Suzie Snow	301-824-3339
Secretary	Barbie MacMichael	301-824-5104
Treasurer	Duane Schlosser	304-274-3420

Sergeant-At-Arms	J C Rice	301-293-1788
	Dana Schafer	301-733-5536
	Tuck Koontz	301-733-5536
	Jeff Christopher	301-416-0071
	Mike Kincaid	
	Burgerman Large	304-258-5048

Meets 2nd Sunday each month 4:00pm at Dog Patch Tavern, Rt. 40, East of Hagerstown, From Green Briar State Park

**Chapter Highlights - ABATE Family Picnic.** The 1st family/chapter picnic was a great success. Even though temperatures raced to 100° but it sure didn't deter the little ones from having a great time. Probably the most welcome game was the water balloon toss. Everyone was hoping to get wet! Attendance was a little less than anticipated. There was plenty of food, and plenty of leftovers. I hop this will be an event that we will keep for years to come. It seems like the adults are always having parties, so let's try to keep this one for the youngsters.

Stay tuned here for the results of our Crab and Chicken Feed 99!

**WORCHESTER COUNTY**

Director	Dave "Prez" Presley	410-213-1237
	prez95ocmd@webtv.com	fax 410-213-7072
Assistant Director	Kery "dog" Mendenhal	410-208-0775
Events	Cookie Lolars	
Legislative	Barry Chenkin	
Products	Russ Henry	410-208-0775
Treasurer	Sue Hirschfeld	410-641-1161

Meets 1st Thursday following the 2nd Sunday of each month at the 707 Shop call any of the officers for directions

**Chapter Highlights**

We had our first nominations and elections in July and August, respectively since we got started as a chapter. Just as other counties throughout the state, we are starting out small in number but our members got a lot of heart! We'll be putting Together a short newsletter soon and will be mailed out to other chapter

directors. When there's events through out the state that aren't listed in the State newsletter or presented at the state meetings, please send flyers and info to Worcester County ABATE Chapter, C/O Prez, 9916 Golf Course RD. #18, Ocean City, MD 21842. One of our meeting members Laconia and busted up her leg. The Lions Club helped us out by getting "Gypsy Rose" a wheel chair and we took up a collection to help ease the cash crunch a little. She's doing alright now. Russ is recuperating from back surgery.

# First Annual Red Ribbon Ride



***This is an open letter to all, especially fire fighters, past and present who ride a motorcycle.***

A ride to the Fallen Fire Fighters Memorial in Emmittsburg, Maryland on October 3, 1999 is being organized to pay our respects to those who have given their lives in the line of duty.

There will be a Memorial service that day, and a good showing would be appreciated. This is the only ride of its kind in the country, and if you would like to participate, please contact either Tom Baker at (res) 301-262-9060, (fax) 301-262-3066, email address CONYANK@ix.netcom.com; or, Terry Lewis at (res) 301-416-7551, (office) 301-293-2916, office fax 301-293-2922, email address windfire31Amsn.com.

A tally of those in your group would be appreciated so a rough estimate of the total number of attendees can be given to the proper authorities.

All riders will meet at the Francis Scott Key Mall at the Patrick Street exit of Rt. 270 in Frederick, Maryland. The ride will begin at 9:00 a.m. with a police escort to Emmittsburg and the Memorial site.

The Ceremonies will begin at 10:30 a.m.



ABATE of MD, Inc., Mid-Shore Chapters

Presents.....

## A Howling Halloween Party



Date: October 23, 1999

Place: Grasonville V.F.W., Grasonville, MD

Time: 8 P.M. until Midnight



Featuring:  
Music by Heartbeat DJ  
Cash Bar & Finger Food  
50/50 Raffle

Costumes are optional...just bring your scary self!

Cost: \$5 per person : \$8 per couple

**ABATE OF MARYLAND, INC JULY/AUGUST 1999**





Motorcycle Riders Foundation  
 P.O. Box 1808,  
 Washington, D.C. 20013-1808  
 202-546-0983 voice, 202-546-0986 fax  
 website www.mrf.org

**Don't forget to contribute to those handy red white and blue MRF bags at your Chapter meetings. IF you don't see one ask your chapter Director where it is and tell him or her you want to contribute to MRF's fight in Washington, DC.**

**FOR OFFICE USE ONLY**  
 (All information treated confidentially)

Referred by \_\_\_\_\_ Date \_\_\_\_\_  
 MRF# \_\_\_\_\_ Exp. Date \_\_\_\_\_

Member was given:  
 Patch  Year Rocker  
 Pin  Newsletter - What issue?

**It's time you did something more to protect your rights!**

Join & Support the Motorcycle Riders Foundation — Register, Vote, Write & Ride!



- Annual Individual Membership \$25.00     Annual Sustaining Membership \$100.00  
 Annual Joint Membership \$40.00     New Membership     Renewal Member# \_\_\_\_\_

**PLEASE PRINT OR TYPE YOUR INFORMATION**

Name		Phone (    )    -
Address		E-mail Address
City	State	Zip
1) Have you ever been a member of the MRF? <input type="checkbox"/> Yes <input type="checkbox"/> No		
2) Are you a member of a state motorcyclists' rights organization? <input type="checkbox"/> Yes <input type="checkbox"/> No If yes, name		
3) What talents do you have that might benefit motorcyclists' rights and the MRF?		
4) Will you volunteer these talents if the MRF needs your help? <input type="checkbox"/> Yes <input type="checkbox"/> No		
Mail with remittance to:		Motorcycle Riders Foundation, Inc., P.O. Box 1808, Washington D.C. 20013-1808
		(202) 546-0983 • FAX (202) 546-0986 • <a href="http://www.mrf.org">http://www.mrf.org</a>

**CHARGE IT!**     Visa     MasterCard    Card # \_\_\_\_\_    Exp. Date \_\_\_\_\_  
 Signature \_\_\_\_\_    Date \_\_\_\_\_

**MTAG UPDATE**  
*Wil Crum*  
*Baltimore County*

On Thursday, September 2, 1999, we attended a meeting concerning the M-tag situation and how it is affecting motorcyclists. In attendance were, Pappy, Jay Block, and from the Baltimore Chapter Lee Dix, Wayne Hock and myself. We met with Tom Osborne, Executive Secretary, Maryland Transportation Authority; Lori Vidil, Director, Media and Customer Relations, and two engineers from the M-tag technical support group.

It seems ETC (Electronice Toll Collection) is being introduced slowly throughout the country, especially on the east coast..and the motorcycle situation is a common problem which still needs to be worked out nationwide. From what I gathered, it seems that finding a way to mount the required transponder is turning out to be a verycomplex problem.

There are two types of transponders used in Maryland. One is about 3½ square and ½" thick and mounts to the inside of a windshield with velco type strips. It works well in cars and trucks but must be at least 3" from any metal. This makes it hard to figure a way to mount it on a motorcycle, except maybe on the inside of the

windshield. However, it works best when mounted at a 45° angle, and unlike cars and trucks, most motorcycle winshields are close to a 90° angle.

The other type of transponder is approximately 8" x 2" x 1" and is designed to work around metal and attaches to your front license plate bolts. You could attach it to your bike with plastic wire ties, but that would look like crap. Also, you couldn't transfer it between vehicles easily.

It seems we're limited to these two types of transponders because the company that M-tag purchases them from won't try to come up with anything else unless there is a large enough market to make it worth their time and effort. I guess nobody thinks wer are a large enough market.

Jay Block came up with want might turn out to be the best idea yet. An arm band with elastic and/or velcro attachments and a pouch to put the transponder in. When worn on the front of your uppoer arm, it would be at about the right ange with your hands remaining on the handlebars, and wouldn't be close to metal. Wayne is going to experiment with this idea and I am going to try to devise some sort of handlebar mount.

Something else I'd like to mention. For the system to work, it has to sense a vehicle's presence as it reads the signal transmitted from the transponder. This is done with a sensor under the pavement in the toll lane which senses metal density. It works best towards the center of the lane. Therefore a small motorcycle, or one with a lot of fiberglass shrouding, or a motorcycle transmitting from toll lane on one side or the other, might not be

*(Continued on page 19)*

(Continued from page 18)

recognized. Of course, in the center of the toll lanes are buildup areas of oil and grease from vehicles stopping to pay. This creates a safety hazard which everyone should be aware of.

Well, at this point all I can say is we're working on it. The M-Tag people seem genuinely concerned with working this out and we definitely want to find a solution. We will schedule another meeting in a few weeks to follow up. If anybody out there has any ideas, please contact me, Wil Crum at 410-780-9342.

Thank you in advance for any input!

RIDE SAFE

**Don't Forget!**

**Tie that string around your helmet for the 8<sup>th</sup> Annual Helmet Protest Rally!**

**October 10<sup>th</sup> 10:00am at the Anne Arundel Fair Grounds**

**Spread the word!  
Come out and be heard!**

**NEWSLETTER SCHEDULE**  
*Toni Robinson*

**Remember to send anything to me you can do one of the following:  
call 301-884-0267 fax: 301-884-5551 (call first)  
e-mail: toni2000r@yahoo.com  
mail: 29786 Adams Road, Mechanicsville MD 20659**

Chapters! CUT OUT AND POST

**October/November 1999**

We would like to make this a year in review edition! Please get any pictures of ABATE functions you may have from the beginning of the year through current if you have a caption you would like to add let me know what you want and we will work it in. If your pictures are in electronic format please e-mail them to me. IF they are originals, send them to me and I will return them when I have scanned them in. Lets make this a great edition.

Include any current articles and flyers for upcoming events

Article and Picture Deadline: 10/30/99

To Printer: November 8<sup>th</sup> or the 5<sup>th</sup> depending on how much scanning I have to do.

Back from Printer: November 12<sup>th</sup> or 19<sup>th</sup> Mail date: November 20<sup>th</sup> or 27<sup>th</sup>

Issue for 2000	Deadline to Editor	To Printer	Mailout
January/February	December 3, 1999	December 13, 1999	December 18, 1999
March/April	February 4, 2000	February 14, 2000	February 20, 2000
May/June	April 7, 2000	April 17, 2000	April 23, 2000
July/August	June 9, 2000	June 19, 2000	June 25, 2000
September/October	August 11, 2000	August 21, 2000	August 27, 2000
November/December	October 13, 2000	October 23, 2000	October 29, 2000
January/February 2001	December 8, 2000	December 18, 2000	December 22, 2000



**ABATE OF MARYLAND, INC.  
PO BOX 1733  
ANNAPOLIS MD 21401**



NEW	RENEWAL	CHANGE OF ADDRESS	Years as a member _____
<b>Annual Membership \$20.00 Couple Membership \$35.00 Lifetime Membership \$200.00</b>			
New members receive a patch, membership card, and six (6) issues of the State newsletter			
Renewing members receive year pin, membership card and six (6) issues of the State newsletter			
PAID BY:	CASH	CHECK # _____	PATCH /PIN ISSUED YES NO
NAME(S) & DATE OF BIRTH _____			
NICKNAME(S) _____			
ADDRESS _____		CITY _____	
STATE _____	ZIP _____	HOME PHONE _____	
Occupation (or skill that may assist ABATE) _____			
APPLICANT(S) SIGNATURE _____			
RECEIVED BY: _____		DATE _____	



ABATE OF MARYLAND, INC  
PO BOX 1733  
ANNAPOLIS MD 21401

**ADDRESS CORRECTION REQUESTED**

Check your Membership have you expired or close to it?  
Why not use this sheet and renew today!